

BUFFALO NIAGARA INTERNATIONAL AIRPORT SUSTAINABLE MASTER PLAN UPDATE



ERIE COUNTY
NEW YORK

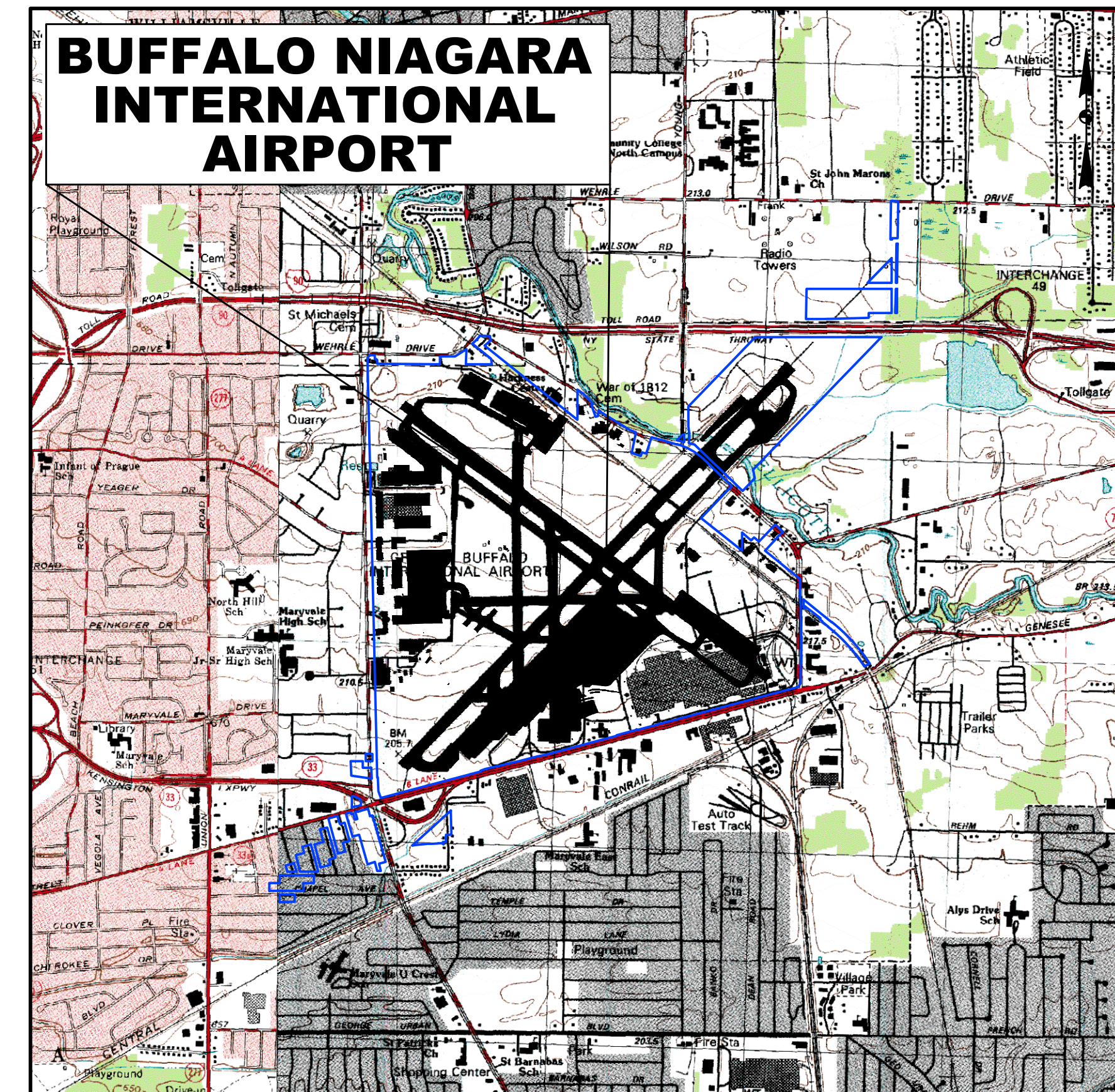
MAY 2013

DRAWING INDEX

SHEET NO.	TITLE
1.	COVER SHEET
2.	EXISTING AIRPORT LAYOUT
3.	AIRPORT LAYOUT PLAN
4.	AIRPORT LAYOUT PLAN TABLES
5.	TERMINAL AREA PLAN
6.	AIRPORT AIRSPACE PLAN
7.	AIRPORT AIRSPACE PLAN OUTER APPROACH SURFACES
8.	INNER APPROACH SURFACE AND RPZ CONTROL PLAN RUNWAY 5-23
9.	DEPARTURE SURFACE CONTROL PLAN RUNWAY 5-23
10.	INNER APPROACH SURFACE AND RPZ CONTROL PLAN RUNWAY 14-32
11.	DEPARTURE SURFACE CONTROL PLAN RUNWAY 14-32
12.	AIRPORT LAND USE PLAN
13.	AIRPORT PROPERTY MAP - "EXHIBIT A"
14.	AIRPORT ENVIROMENTAL INVENTORY MAP



Location Map



Vicinity Map

Prepared For:
NFTA
Niagara Frontier Transportation Authority

Prepared By:
McFarland Johnson
49 COURT STREET, METROCENTER, PO BOX 1980
BINGHAMTON, NEW YORK 13902

FAA AIP PROJECT NO. 3-36-0009-70-10
NYS PIN: 5913.11
NFTA PROJECT NO. 30BG0916
McFARLAND JOHNSON PROJECT NO. 17493.00

NFTA
Niagara Frontier
Transportation Authority
Serving Buffalo Niagara

**BUFFALO NIAGARA
INTERNATIONAL
AIRPORT**

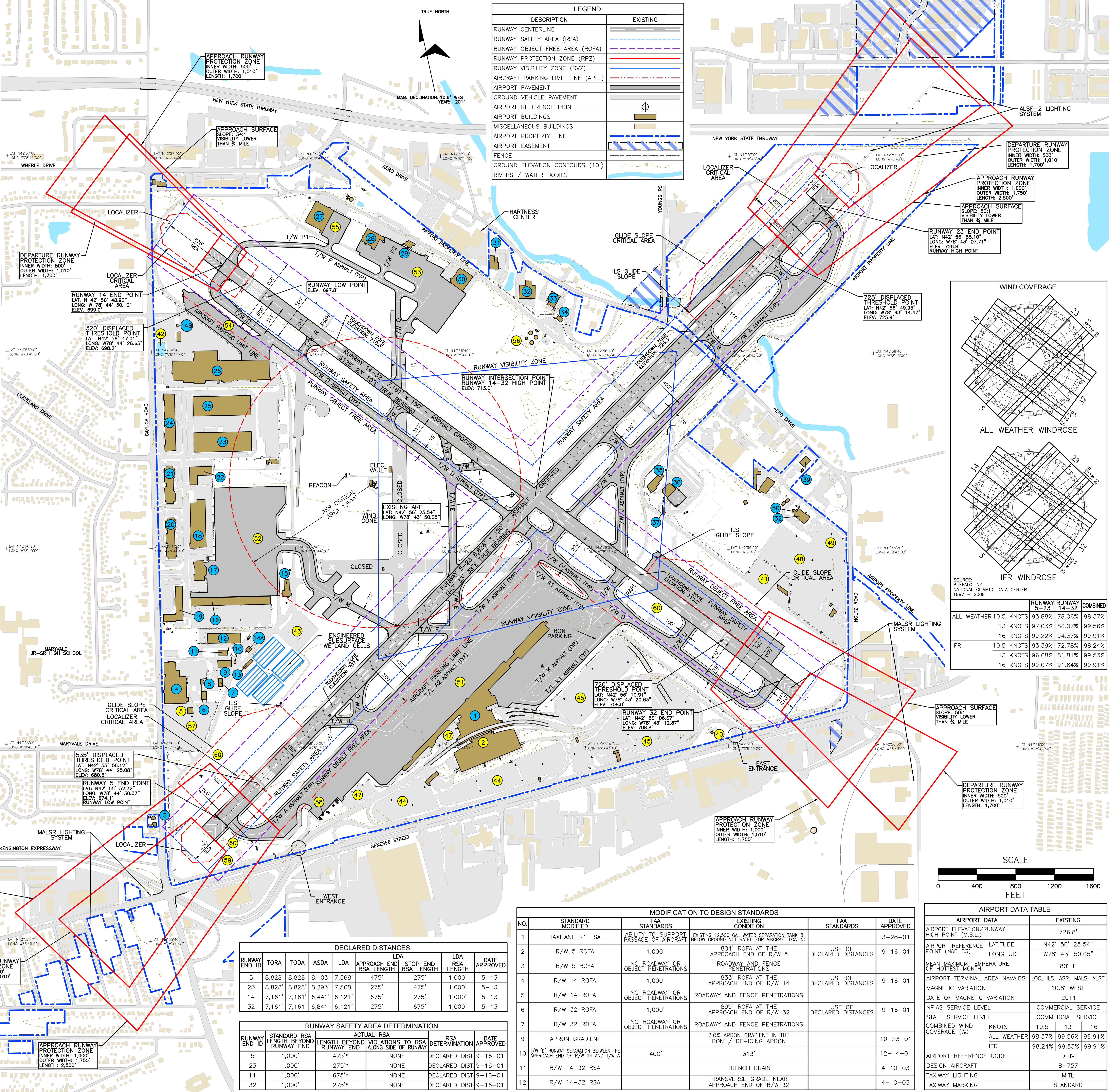
—

**SUSTAINABLE
MASTER PLAN UPDATE**

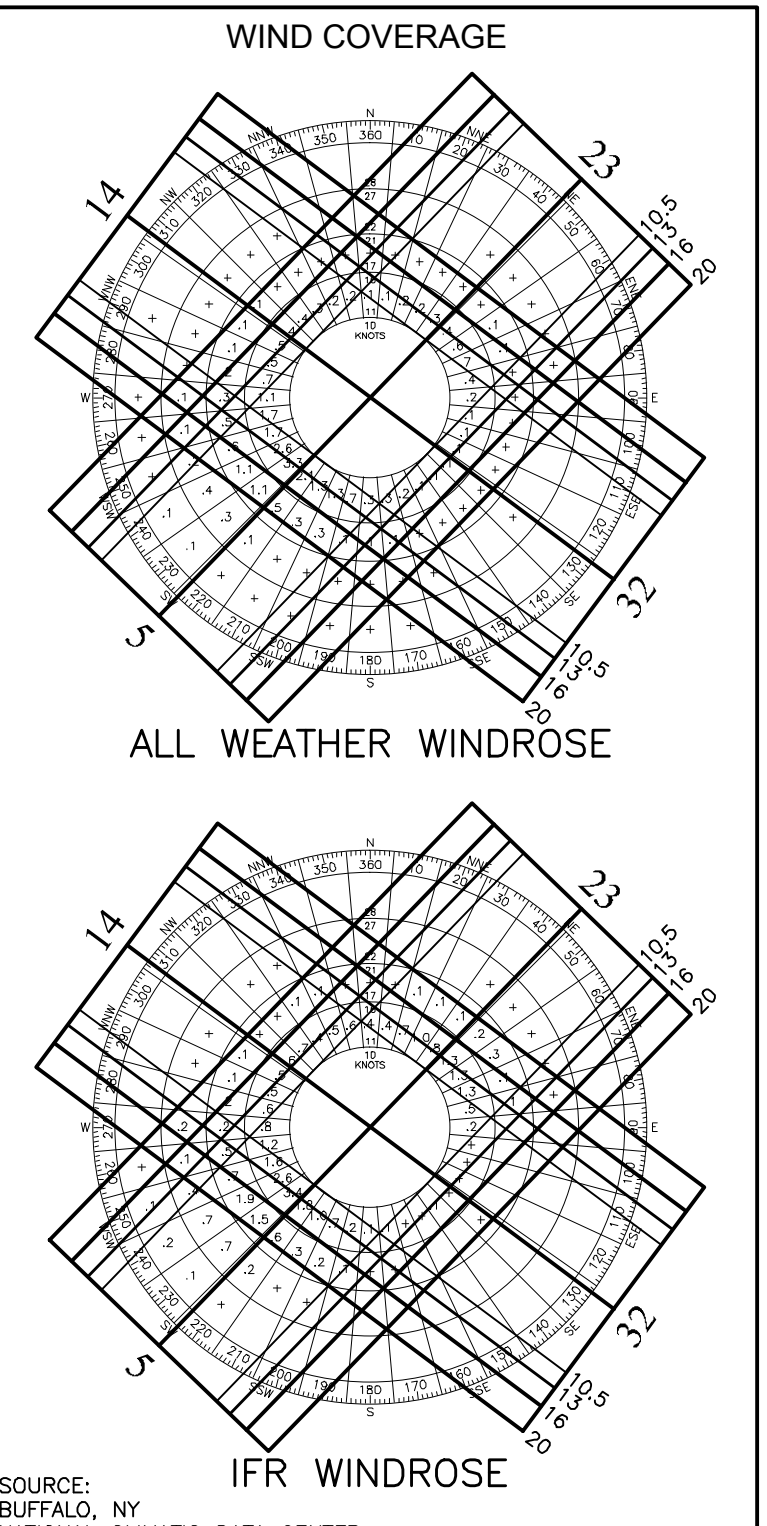
MARK	DATE	DESCRIPTION
ISSUE:		
NFTA PROJECT NO:		30BG0916
DESIGNER PROJECT NO:		17493.00
CAD DWG FILE:		CT-101.DWG
DRAWN BY:		RGT
CHECKED BY:		JEP
SCALE:		AS NOTED
COPYRIGHT:		
SHEET TITLE		
COVER SHEET		
DRAWING#		
CT101		
SHEET#		
1 OF 14		

RUNWAY DATA TABLE		
ITEM	RUNWAY 5-23	RUNWAY 14-32
EFFECTIVE RUNWAY GRADIENT	0.6%	0.1%
MAXIMUM GRADE CHANGE	1.4%	0.9%
WIND COVERAGE (%) ALL WEATHER	99.22%	94.57%
16 KNOTS	IFR	91.65%
MAX. ELEVATION (MSL)	726.8'	713.0'
RUNWAY LENGTH	8,828'	7,161'
RUNWAY WIDTH	150'	150'
DISPLACED THRESHOLD	535' / 725'	320' / 720'
DECLARED DISTANCES		
TORA	8,828' / 8,828'	7,161' / 7,161'
TODA	8,828' / 8,828'	7,161' / 7,161'
ASDA	8,103' / 8,293'	6,441' / 6,841'
LDA	7,568' / 7,568'	6,121' / 6,121'
USABLE RUNWAY LENGTH	8,828'	7,161'
SURFACE TYPE	ASPHALT GROOVED	ASPHALT GROOVED
PAVEMENT STRENGTH		
SINGLE WHEEL	75,000 LBS	75,000 LBS
DUAL WHEEL	195,000 LBS	150,000 LBS
DUAL TANDEM	450,000 LBS	240,000 LBS
APPROACH SURFACE SLOPE	50:1 / 50:1	34:1 / 50:1
APPROACH MINIMUMS	< 3/4 MILE / < 3/4 MILE	≥ 1 MILE / < 3/4 MILE
VISUAL APPROACH AIDS	MALSR TDZ, ALSF-2 TDZ, CL LIGHTS / CL LIGHTS, TDZ LIGHTS / TDZ LIGHTS	RELS, PAPI, REILS, PAPI, MALSR
INSTRUMENT APPROACH AIDS	ILS, RNAV, LOC	ILS, RNAV, LOC, DME
RUNWAY LIGHTING	HIRL	HIRL
RUNWAY MARKING	PIR / PIR	NPI / PIR
AIRCRAFT REFERENCE CODE (ARC)	D-IV	D-IV
CRITICAL AIRCRAFT	AIRBUS A300-A600	737-800 / A321
RUNWAY OBJECT FREE AREA (ROFA)		
LENGTH BEYOND RUNWAY	475' / 275'	675' / 275'
WIDTH	800'	800'
RUNWAY SAFETY AREA (RSA)		
LENGTH BEYOND RUNWAY	475' / 275'	675' / 275'
WIDTH	500'	500'
OBSTACLE FREE ZONE (OFZ)		
LENGTH BEYOND RUNWAY	200'	200'
WIDTH	400'	400'
FAR PART 77 CATEGORY	PIR / PIR	NPI / PIR
FAR PART 77 PRIMARY SURFACE		
LENGTH BEYOND RUNWAY	200'	200'
WIDTH	1,000'	1,000'
RWY END COORDINATES		
LATITUDE	5 - N42° 55' 52.32"	14 - N42° 56' 48.89"
LONGITUDE	5 - W78° 44' 30.07"	14 - W78° 44' 30.10"
LATITUDE	23 - N42° 56' 55.10"	32 - N42° 56' 06.67"
LONGITUDE	23 - W78° 43' 07.71"	32 - W78° 43' 12.87"
RUNWAY END ELEVATIONS (MSL)	674.1' / 726.8'	699.0' / 708.8'
DISPLACED THRESHOLD ELEVATION (MSL)	680.6' / 725.9'	698.2' / 708.0'
TDZ ELEVATION (MSL)	707.6' / 725.9'	710.3' / 713.0'
LINE OF SIGHT VIOLATIONS	NONE	NONE

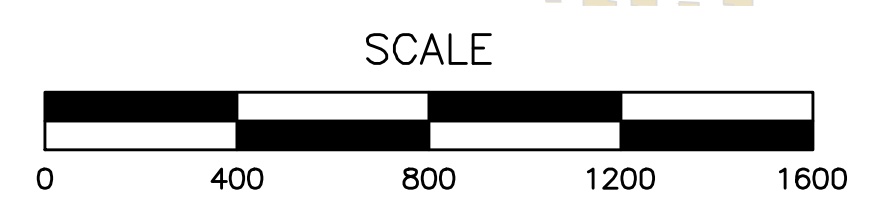
AIRPORT FACILITIES TABLE	
ID	EXISTING - BUILDING
1	PASSENGER TERMINAL
3	68 CAYUGA RD. (NOISE MITIGATION MODEL HOME)
4	247 CAYUGA RD. - INC.
6	251C CAYUGA RD. (AIRPORT OPERATIONS CENTER)
7	251 CAYUGA RD. #3 (ELECTRICAL MAINTENANCE FACILITIES)
8	251 CAYUGA RD. #4 (ADMINISTRATIVE/RECORDS STORAGE)
9	GROUND SUPPORT EQUIPMENT BUILDING
10	TURTURATOR BUILDING
11	NFTA FLEET MAINTENANCE BUILDING/AIRFIELD STORAGE
12	NFTA MAINTENANCE GARAGE
13	GLYCOL TREATMENT UTILITY BUILDING
14A-B	AIRPORT RESCUE AND FIRE FIGHTING
15	283 CAYUGA RD. (AIR CARGO FACILITY)
16	285 CAYUGA RD. (USPS AIR MAIL FACILITY)
17	299 CAYUGA RD. (FedEx)
18	301 CAYUGA RD.
19	303 CAYUGA RD.
20	305 CAYUGA RD.
21	307 CAYUGA RD.
22	425 CAYUGA RD.
23	455 CAYUGA RD.
24	475 CAYUGA RD.
25	485 CAYUGA RD. (DRS TECHNOLOGIES)
26	PRIOR AVIATION HANGAR #3
27	PRIOR AVIATION HANGAR #1
28	50 N. AIRPORT DR. (PRIOR AVIATION EXECUTIVE TERMINAL)
29	PRIOR AVIATION HANGAR #2
30	175 AERO DR. (NFTA POLICE)
31	199 AERO DR. (NFTA FMD/DOCUMENT STORAGE)
32	235 AERO DR. (EVOLUTION DENTAL LAB)
33	275 AERO DR. (FUEL FARM CONTROL BUILDING)
34	100 AMHERST VILLA RD. (MERCY FLIGHT)
35	MERCY FLIGHT HANGAR
36	NATIONAL WEATHER SERVICE OBSERVATORY
37	587 AERO DR. (NATIONAL WEATHER SERVICE)
38	FAA CONTROL TOWER
39	
40	
41	
42	
43	
44	
45	
46	
47	
48	
49	
50	
51	
52	
53	
54	
55	
56	
57	
58	
59	
60	



LEGEND	
DESCRIPTION	EXISTING
RUNWAY CENTERLINE	
RUNWAY SAFETY AREA (RSA)	
RUNWAY OBJECT FREE AREA (ROFA)	
RUNWAY PROTECTION ZONE (RPZ)	
RUNWAY VISIBILITY ZONE (RVZ)	
AIRCRAFT PARKING LIMIT LINE (APLL)	
AIRPORT PAVEMENT	
GROUND VEHICLE PAVEMENT	
AIRPORT REFERENCE POINT	
AIRPORT BUILDINGS	
MISCELLANEOUS BUILDINGS	
AIRPORT PROPERTY LINE	
AIRCRAFT EASEMENT	
FENCE	
GROUND ELEVATION CONTOURS (10')	
RIVERS / WATER BODIES	



	RUNWAY 5-23	RUNWAY 14-32	COMBINED
ALL WEATHER 10.5 KNOTS	93.88%	78.06%	98.37%
13 KNOTS	97.03%	86.07%	99.56%
16 KNOTS	99.22%	94.37%	99.91%
IFR 10.5 KNOTS	93.39%	72.78%	98.24%
13 KNOTS	96.68%	81.81%	99.53%
16 KNOTS	99.07%	91.64%	99.91%



DECLARED DISTANCES						
RUNWAY END ID	TORA	TODA	ASDA	LDA	APPROACH END RSA LENGTH	DATE APPROVED
5	8,828'	8,828'	8,103'	7,568'	475'	5-13
23	8,828'	8,828'	8,293'	7,568'	275'	5-13
14	7,161'	7,161'	6,441'	6,121'	675'	5-13
32	7,161'	7,161'	6,841'	6,121'	275'	5-13

RUNWAY SAFETY AREA DETERMINATION						
RUNWAY END ID	STANDARD RSA LENGTH BEYOND RUNWAY END	ACTUAL RSA LENGTH BEYOND VIOLATIONS TO RSA ALONG SIDE OF RUNWAY	SA DETERMINATION	DATE APPROVED		
5	1,000'	475'	NONE	9-16-01		
23	1,000'	275'	DECLARED DIST	9-16-01		
14	1,000'	675'	DECLARED DIST	9-16-01		
32	1,000'	275'	NONE	9-16-01		

MODIFICATION TO DESIGN STANDARDS				
NO.	STANDARD MODIFIED	FAA STANDARDS	EXISTING CONDITION	DATE APPROVED
1	TAXILANE K1 TSA	ABILITY TO SUPPORT PASSAGE OF AIRCRAFT	EXISTING 12,500 GAL. WATER SEPARATION TANK 8" BELOW GROUND NOT RATED FOR AIRCRAFT LOADING	3-28-01
2	R/W 5 ROFA	1,000'	804' ROFA AT THE APPROACH END OF R/W 5	9-16-01
3	R/W 5 ROFA	NO ROADWAY OR OBJECT PENETRATIONS	ROADWAY AND FENCE PENETRATIONS	
4	R/W 14 ROFA	1,000'	833' ROFA AT THE APPROACH END OF R/W 14	9-16-01
5	R/W 14 ROFA	NO ROADWAY OR OBJECT PENETRATIONS	ROADWAY AND FENCE PENETRATIONS	
6	R/W 32 ROFA	1,000'	899' ROFA AT THE APPROACH END OF R/W 32	9-16-01
7	R/W 32 ROFA	NO ROADWAY OR OBJECT PENETRATIONS	ROADWAY AND FENCE PENETRATIONS	
9	APRON GRADIENT		2.0% APRON GRADIENT IN THE RON / DE-ICING APRON	10-23-01
10	T/W 17 RUNWAY SEPARATION BETWEEN THE APPROACH END OF R/W 14 AND T/W A	400'	313'	12-14-01
11	R/W 14-32 RSA		TRENCH DRAIN	4-10-03
12	R/W 14-32 RSA		TRANSVERSE GRADE NEAR APPROACH END OF R/W 32	4-10-03

AIRPORT DATA TABLE			
AIRPORT DATA	EXISTING		
AIRPORT ELEVATION/RUNWAY HIGH POINT (M.S.L.)	726.8'		
AIRPORT REFERENCE POINT (NAD 83)			
LATITUDE	N42° 56' 25.54"		
LONGITUDE	W78° 43' 50.05"		
MEAN MAXIMUM TEMPERATURE OF HOTTEST MONTH	80° F		
AIRPORT TERMINAL AREA NAVAIDS	LOC, ILS, ASR, MALS, ALSF		
MAGNETIC VARIATION	10.8' WEST		
DATE OF MAGNETIC VARIATION	2011		
NPIAS SERVICE LEVEL	COMMERCIAL SERVICE		
STATE SERVICE LEVEL	COMMERCIAL SERVICE		
COMBINED WIND COVERAGE (%)		10.5	13
ALL WEATHER	98.37%	99.56%	99.91%
IFR	98.24%	99.53%	99.91%
AIRPORT REFERENCE CODE	D-IV		
DESIGN AIRCRAFT	B-757		
TAXIWAY LIGHTING	MITL		
TAXIWAY MARKING	STANDARD		

BUFFALO NIAGARA INTERNATIONAL AIRPORT

McFarland Johnson
49 COURT STREET, WESTCHESTER, PA 19380
PHILADELPHIA, NEW YORK, 13822 www.mjf.com

NFTA
Niagara Frontier Transportation Authority
Serving Buffalo Niagara

BUFFALO NIAGARA INTERNATIONAL AIRPORT

SUSTAINABLE MASTER PLAN UPDATE

MARK	DATE	DESCRIPTION
ISSUE:		
NFTA PROJECT NO:	30BG0916	
DESIGNER PROJECT NO:	17493.00	
CAD DWG FILE:	CT-102.DWG	
DRAWN BY:	RCT	
CHECKED BY:	JEP	
SCALE:	AS NOTED	
COPYRIGHT:		
SHEET TITLE		
EXISTING AIRPORT LAYOUT		
DRAWING#	CT102	
SHEET#	2 OF 14	

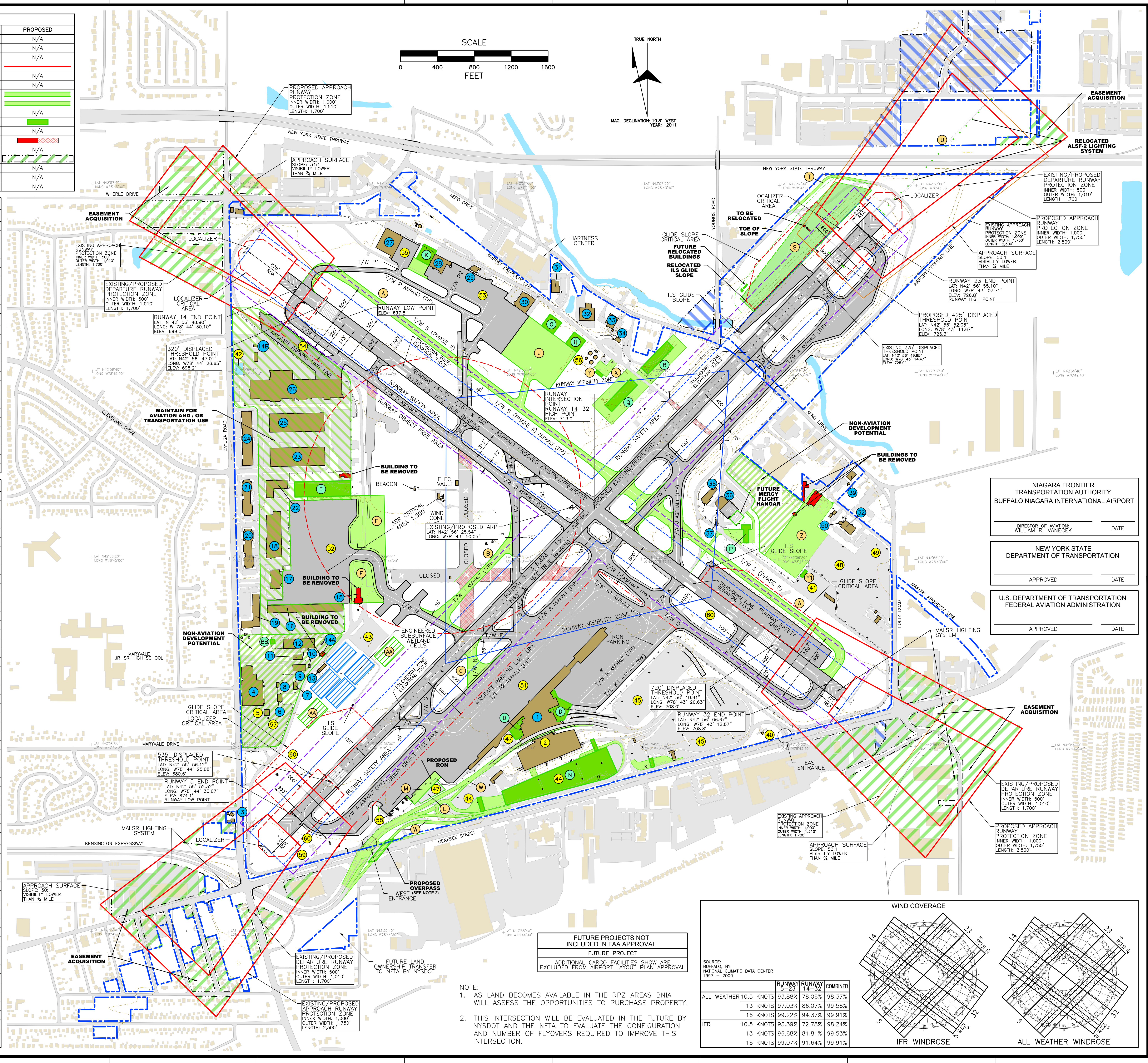
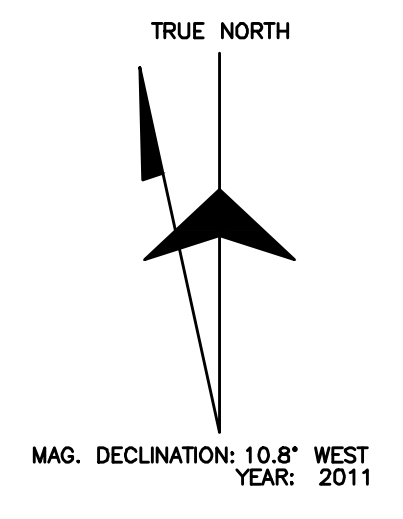
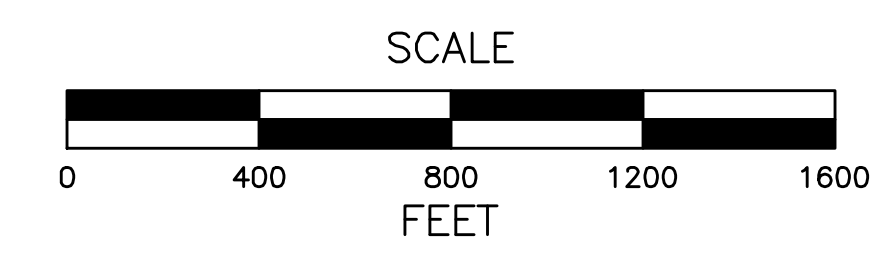
DESCRIPTION	EXISTING	PROPOSED
RUNWAY CENTERLINE		N/A
RUNWAY SAFETY AREA (RSA)		N/A
RUNWAY OBJECT FREE AREA (ROFA)		N/A
RUNWAY PROTECTION ZONE (RPZ)		N/A
RUNWAY VISIBILITY ZONE (RVZ)		N/A
AIRCRAFT PARKING LIMIT LINE (APLL)		N/A
AIRCRAFT PAVEMENT		
GROUND VEHICLE PAVEMENT		
AIRCRAFT REFERENCE POINT		
AIRCRAFT BUILDINGS		N/A
MISCELLANEOUS BUILDINGS		N/A
TO BE REMOVED		
AIRCRAFT PROPERTY LINE		N/A
AIRCRAFT EASEMENT		N/A
FENCE		N/A
GROUND ELEVATION CONTOURS (10')		N/A
RIVERS / WATER BODIES		N/A

AIRCRAFT FACILITIES TABLE	
ID	PROPOSED - BUILDING
D	TERMINAL EXPANSION
E	AIR CARGO BUILDING EXPANSION
G	GENERAL AVIATION HANGAR
H	GENERAL AVIATION HANGAR
K	GENERAL AVIATION HANGAR
N	PARKING GARAGE (4,000 SPACES)
P	PROPOSED ARFF BUILDING
Q	PROPOSED AIRFIELD MAINTENANCE / SRE BUILDING
R	PROPOSED AIRFIELD MAINTENANCE / SRE BUILDING
BB	REPLACEMENT SALT BARN (DEMO 14A)
ID	PROPOSED
A	PROPOSED RUNWAY 14-32 PARALLEL T/W S
B	PROPOSED RUNWAY 5-23 PARTIAL PARALLEL T/W T
C	PROPOSED RUNWAY 5-23 ACCESS T/W N
F	AIR CARGO APRON EXPANSION
J	GENERAL AVIATION APRON EXPANSION
L	RELOCATED GLYCOL FACILITIES
M	RON PARKING AREA
S	PROPOSED EARTH PLATFORM FOR CAT II ILS SYSTEM
T	RELOCATED SERVICE ROAD
U	RELOCATED ALSF-2
W	RELOCATED TERMINAL ACCESS ROADWAYS
X	PROPOSED FUEL FARM EXPANSION
Y	PROPOSED CNG FILLING STATION
Y1	PROPOSED CNG FILLING STATION - ALTERNATE SITE
Z	PROPOSED LONG TERM "B" PARKING EXPANSION
AA	PROPOSED ENGINEERED SUBSURFACE WETLAND CELLS

ID	EXISTING - BUILDING
1	PASSENGER TERMINAL
3	68 CAYUGA RD. (NOISE MITIGATION MODEL HOME)
4	247 CAYUGA RD. - INC.
6	251C CAYUGA RD. (AIRPORT OPERATIONS CENTER)
7	251 CAYUGA RD. #3 (ELECTRICAL MAINTENANCE FACILITIES)
8	251 CAYUGA RD. #4 (ADMINISTRATIVE/RECORDS STORAGE)
9	GROUND SUPPORT EQUIPMENT BUILDING
10	TRITURATOR BUILDING
11	NFTA FLEET MAINTENANCE BUILDING/AIRFIELD STORAGE
12	NFTA MAINTENANCE GARAGE
13	GLYCOL TREATMENT UTILITY BUILDING
14A-B	SALT STORAGE BUILDINGS
15	AIRCRAFT RESCUE AND FIRE FIGHTING
16	283 CAYUGA RD. (AIR CARGO FACILITY)
17	285 CAYUGA RD. (USPS AIR MAIL FACILITY)
18	299 CAYUGA RD. (FedEx)
19	301 CAYUGA RD.
20	303 CAYUGA RD.
21	305 CAYUGA RD.
22	307 CAYUGA RD.
23	425 CAYUGA RD. (FUEL FARM CONTROL BUILDING)
24	455 CAYUGA RD.
25	475 CAYUGA RD.
26	485 CAYUGA RD. (DRS TECHNOLOGIES)
27	PRIOR AVIATION HANGAR #3
28	PRIOR AVIATION HANGAR #1
29	50 N. AIRPORT DR. (PRIOR AVIATION EXECUTIVE TERMINAL)
30	PRIOR AVIATION HANGAR #2
31	175 AERO DR. (NFTA POLICE)
32	199 AERO DR. (NFTA FMD/DOCUMENT STORAGE)
33	235 AERO DR. (EVOLUTION DENTAL LAB)
34	275 AERO DR. (FUEL FARM CONTROL BUILDING)
35	100 AMHERST VILLA RD. (MERCY FLIGHT)
36	MERCY FLIGHT HANGAR
37	NATIONAL WEATHER SERVICE OBSERVATORY
39	587 AERO DR. (NATIONAL WEATHER SERVICE)
50	FAA CONTROL TOWER

ID	EXISTING
2	PARKING STRUCTURE - SHORT TERM 1,355 SPACES
5	BNA EMPLOYEE PARKING SHELTER
40	GROUNDWATER TESTING FACILITY
41	REMOTE FUEL DISPENSING FACILITY
42	FIRE PROTECTION RESERVOIR
43	SNOW MELT PAD
44	LONG TERM PREFERRED - 1,439 SPACES
45	LONG TERM "A" - 2,693 SPACES
46	LIMO LOT - 28 SPACES
47	WEST LOT - 128 SPACES
48	LONG TERM "B" - 1,874 SPACES
49	PARK & RIDE CELL PHONE LOT - 22 SPACES
51	MAIN TERMINAL APRON
52	AIR CARGO APRON
53	GENERAL AVIATION APRON
54	GENERAL AVIATION APRON
55	GENERAL AVIATION APRON
56	AIRCRAFT FUEL FARM
57	EMPLOYEE PARKING
58	GLYCOL STORAGE FARM
59	UNDERGROUND STORM WATER RETENTION BASIN
60	UNDERGROUND GLYCOL STORAGE TANKS

NOTE: BUILDING #38 SOLD 11-2002



NIAGARA FRONTIER TRANSPORTATION AUTHORITY
BUFFALO NIAGARA INTERNATIONAL AIRPORT

DIRECTOR OF AVIATION: WILLIAM R. VANECEK

NEW YORK STATE DEPARTMENT OF TRANSPORTATION

U.S. DEPARTMENT OF TRANSPORTATION FEDERAL AVIATION ADMINISTRATION

APPROVED _____ DATE _____

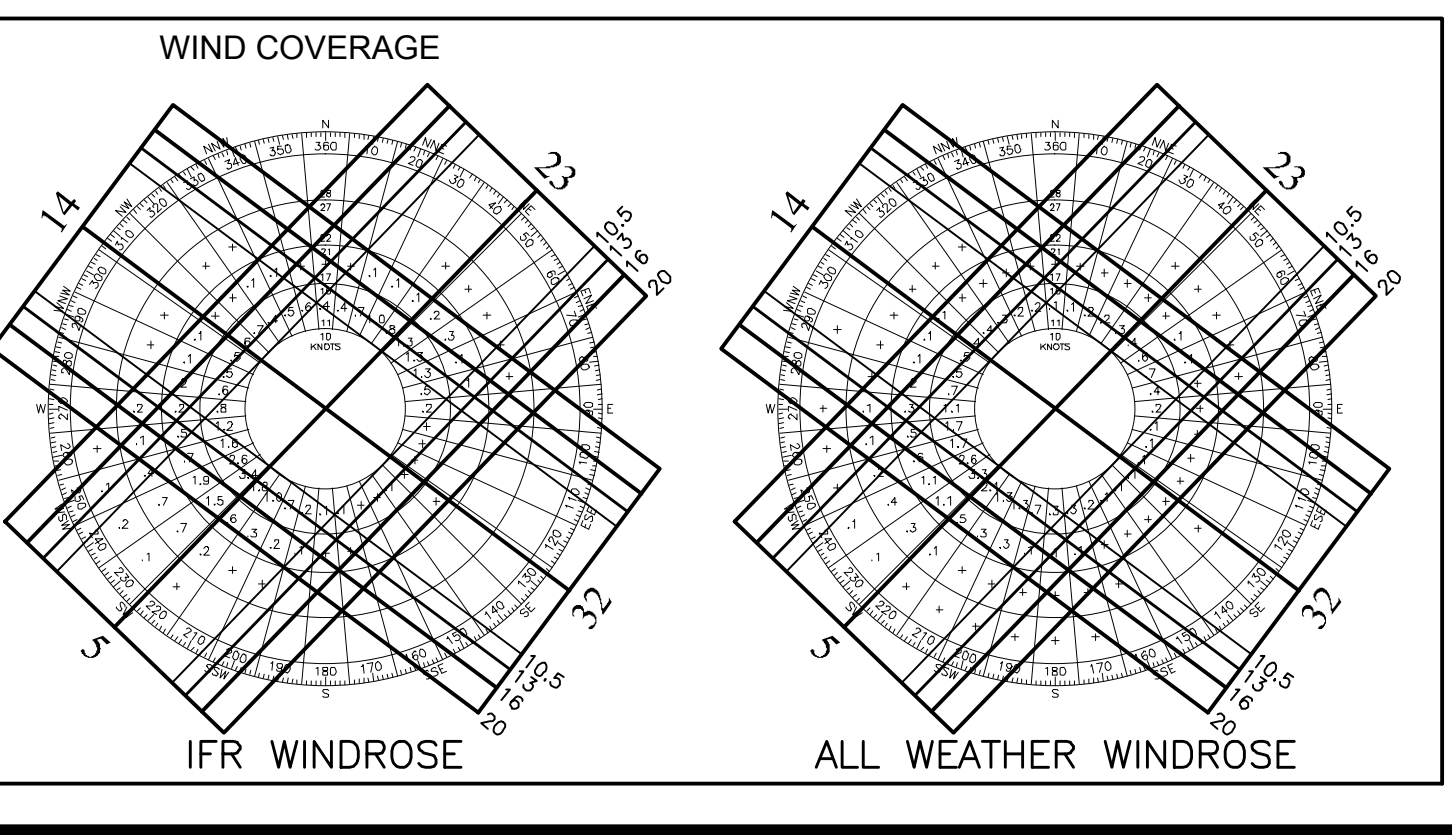
APPROVED _____ DATE _____

FUTURE PROJECTS NOT INCLUDED IN FAA APPROVAL

FUTURE PROJECT

ADDITIONAL CARGO FACILITIES SHOW ARE EXCLUDED FROM AIRPORT LAYOUT PLAN APPROVAL

	RUNWAY 5-23	RUNWAY 14-32	COMBINED
ALL WEATHER 10.5 KNOTS	93.88%	78.06%	98.37%
13 KNOTS	97.03%	86.07%	99.56%
16 KNOTS	99.22%	94.37%	99.91%
IFR	10.5 KNOTS	93.39%	98.24%
13 KNOTS	96.68%	81.81%	99.53%
16 KNOTS	99.07%	91.64%	99.91%



NOTE:
1. AS LAND BECOMES AVAILABLE IN THE RPZ AREAS BNA WILL ASSESS THE OPPORTUNITIES TO PURCHASE PROPERTY.
2. THIS INTERSECTION WILL BE EVALUATED IN THE FUTURE BY NYSDOT AND THE NFTA TO EVALUATE THE CONFIGURATION AND NUMBER OF FLYOVERS REQUIRED TO IMPROVE THIS INTERSECTION.



BUFFALO NIAGARA INTERNATIONAL AIRPORT

SUSTAINABLE MASTER PLAN UPDATE

MARK	DATE	DESCRIPTION

ISSUE: 30B0916

DESIGNER PROJECT NO: 17493.00

CAD DWG FILE: CT-103.DWG

DRAWN BY: RGT

CHECKED BY: JEP

SCALE: AS NOTED

COPYRIGHT:

SHEET TITLE

AIRCRAFT LAYOUT PLAN

DRAWING# **CT103**

SHEET# 3 OF 14

RUNWAY DATA TABLE				
ITEM	RUNWAY 5-23		RUNWAY 14-32	
	EXISTING	EXISTING	PROPOSED	PROPOSED
EFFECTIVE RUNWAY GRADIENT	0.6%	0.1%	SAME	SAME
MAXIMUM GRADE CHANGE	1.4%	0.9%	SAME	SAME
WIND COVERAGE (%) ALL WEATHER	99.22%	94.57%	SAME	SAME
16 KNOTS IFR	99.07%	91.65%	SAME	SAME
MAX. ELEVATION (MSL)	726.8'	713.0'	SAME	SAME
RUNWAY LENGTH	8,828'	7,161'	SAME	SAME
RUNWAY WIDTH	150'	150'	SAME	SAME
DISPLACED THRESHOLD	535' / 725'	320' / 720'	535' / 425'	SAME
DECLARED DISTANCES	8,828' / 8,828'		7,161' / 7,161'	
TORA	8,828' / 8,828'		7,161' / 7,161'	
TODA	8,103' / 8,293'		6,441' / 6,841'	
ASDA	8,103' / 8,293'		6,441' / 6,841'	
LDA	7,568' / 7,568'		6,121' / 6,121'	
USABLE RUNWAY LENGTH	8,828'		7,161'	
SURFACE TYPE	ASPHALT GROOVED		ASPHALT GROOVED	
PAVEMENT STRENGTH	SINGLE WHEEL 75,000 LBS		75,000 LBS	
DUAL WHEEL	195,000 LBS		150,000 LBS	
DUAL TANDEM	450,000 LBS		240,000 LBS	
APPROACH SURFACE SLOPE	50:1 / 50:1		34:1 / 50:1	
APPROACH MINIMUMS	< 3/4 MILE / < 3/4 MILE		≥ 1 MILE / < 3/4 MILE	
VISUAL APPROACH AIDS	MALSR TDZ, ALSF-2 TDZ, CL LIGHTS, TDZ LIGHTS		REILS, PAPI, REILS, PAPI, MALSR	
INSTRUMENT APPROACH AIDS	ILS, RNAV, LOC		ILS, RNAV, LOC, DME	
RUNWAY LIGHTING	HIRL		HIRL	
RUNWAY MARKING	PIR / PIR		NPI / PIR	
AIRPORT REFERENCE CODE (ARC)	D-IV		D-IV	
CRITICAL AIRCRAFT	AIRBUS A300-A600		737-800 / A321	
RUNWAY OBJECT FREE AREA (ROFA)	LENGTH BEYOND RUNWAY 475' / 275'		675' / 275'	
WIDTH	800'		800'	
RUNWAY SAFETY AREA (RSA)	LENGTH BEYOND RUNWAY 475' / 275'		675' / 275'	
WIDTH	500'		500'	
OBSTACLE FREE ZONE (OFZ)	LENGTH BEYOND RUNWAY 200'		200'	
WIDTH	400'		400'	
FAR PART 77 CATEGORY	PIR / PIR		NPI / PIR	
FAR PART 77 PRIMARY SURFACE	LENGTH BEYOND RUNWAY 200'		200'	
WIDTH	1,000'		1,000'	
R/W END COORDINATES	LATITUDE 5 - N42° 55' 52.32"		14 - N42° 56' 48.89"	
LONGITUDE	5 - W78° 44' 30.07"		14 - W78° 44' 30.10"	
LATITUDE	23 - N42° 56' 55.10"		32 - N42° 56' 06.67"	
LONGITUDE	23 - W78° 43' 07.71"		32 - W78° 43' 12.87"	
RUNWAY END ELEVATIONS (MSL)	674.1' / 726.8'		699.0' / 708.8'	
DISPLACED THRESHOLD ELEVATION (MSL)	680.6' / 725.9'		698.2' / 708.0'	
TDZ ELEVATION (MSL)	707.6' / 725.9'		710.3' / 713.0'	
LINE OF SIGHT VIOLATIONS	NONE		NONE	

* LENGTH COMPLIES WITH DESIGN STANDARDS WITH THE USE OF DECLARED DISTANCES

AIRPORT DATA TABLE						
AIRPORT DATA		EXISTING			PROPOSED	
AIRPORT ELEVATION/RUNWAY HIGH POINT (M.S.L.)		726.8'			SAME	
AIRPORT REFERENCE POINT (NAD 83)	LATITUDE	N42° 56' 25.54"			SAME	
	LONGITUDE	W78° 43' 50.05"			SAME	
MEAN MAXIMUM TEMPERATURE OF HOTTEST MONTH		80° F			SAME	
AIRPORT TERMINAL AREA NAVAIDS		LOC, ILS, ASR, MALSR, ALSF			SAME	
MAGNETIC VARIATION		10.8° WEST			SAME	
DATE OF MAGNETIC VARIATION		2011			SAME	
NPIAS SERVICE LEVEL		COMMERCIAL SERVICE			SAME	
STATE SERVICE LEVEL		COMMERCIAL SERVICE			SAME	
COMBINED WIND COVERAGE (%)	KNOTS	10.5	13	16	10.5	13
	ALL WEATHER	98.37%	99.56%	99.91%	SAME	SAME
	IFR	98.24%	99.53%	99.91%	SAME	SAME
AIRPORT REFERENCE CODE		D-IV			SAME	
DESIGN AIRCRAFT		B-757			SAME	
TAXIWAY LIGHTING		MITL			SAME	
TAXIWAY MARKING		STANDARD			SAME	

DECLARED DISTANCES -EXISTING CONDITIONS							
RUNWAY END ID	TORA	TODA	ASDA	LDA	LDA		DATE APPROVED
					APPROACH END RSA LENGTH	STOP END RSA LENGTH	
5	8,828'	8,828'	8,103'	7,568'	475'	275'	5-13
23	8,828'	8,828'	8,293'	7,568'	275'	475'	5-13
14	7,161'	7,161'	6,441'	6,121'	675'	275'	5-13
32	7,161'	7,161'	6,841'	6,121'	275'	675'	5-13

RUNWAY SAFETY AREA DETERMINATION					
RUNWAY END ID	STANDARD RSA LENGTH BEYOND RUNWAY END	ACTUAL RSA LENGTH BEYOND RUNWAY END	VIOLATIONS TO RSA ALONG SIDE OF RUNWAY	RSA DETERMINATION	DATE APPROVED
23	1,000'	275'	NONE	DECLARED DIST	9-16-01
14	1,000'	675'	NONE	DECLARED DIST	9-16-01
32	1,000'	275'	NONE	DECLARED DIST	9-16-01

* MITIGATED USING DECLARED DISTANCES.

MODIFICATION TO DESIGN STANDARDS					
NO.	STANDARD MODIFIED	FAA STANDARDS	EXISTING CONDITION	PROPOSED ACTION	DATE APPROVED
1	TAXILANE K1 TSA	ABILITY TO SUPPORT PASSAGE OF AIRCRAFT	EXISTING 12,500 GAL WATER SEPARATION TANK 8' BELOW GROUND NOT RATED FOR AIRCRAFT LOADING		3-28-01
2	R/W 5 ROFA	1,000'	804' ROFA AT THE APPROACH END OF R/W 5	USE OF DECLARED DISTANCES	9-16-01
3	R/W 5 ROFA	NO ROADWAY OR OBJECT PENETRATIONS	ROADWAY AND FENCE PENETRATIONS		
4	R/W 14 ROFA	1,000'	833' ROFA AT THE APPROACH END OF R/W 14	USE OF DECLARED DISTANCES	9-16-01
5	R/W 14 ROFA	NO ROADWAY OR OBJECT PENETRATIONS	ROADWAY AND FENCE PENETRATIONS		
6	R/W 32 ROFA	1,000'	899' ROFA AT THE APPROACH END OF R/W 32	USE OF DECLARED DISTANCES	9-16-01
7	R/W 32 ROFA	NO ROADWAY OR OBJECT PENETRATIONS	ROADWAY AND FENCE PENETRATIONS		
8	APRON GRADIENT		2.0% APRON GRADIENT IN THE RON / DE-ICING APRON		10-23-01
9	T/W 'D' RUNWAY SEPARATION BETWEEN THE APPROACH END OF R/W 14 AND T/W A	400'	313'		12-14-01
10	R/W 14-32 RSA		TRENCH DRAIN		4-10-03
11	R/W 14-32 RSA		TRANSVERSE GRADE NEAR APPROACH END OF R/W 32		4-10-03

DECLARED DISTANCES -FUTURE CONDITIONS							
RUNWAY END ID	TORA	TODA	ASDA	LDA	LDA		DATE APPROVED
					APPROACH END RSA LENGTH	STOP END RSA LENGTH	
5	8,828'	8,828'	8,103'	7,568'	475'	275'	N/A
23	8,828'	8,828'	8,293'	7,568'	275'	475'	N/A
14	7,161'	7,161'	6,441'	6,121'	675'	275'	N/A
32	7,161'	7,161'	6,841'	6,121'	275'	675'	N/A

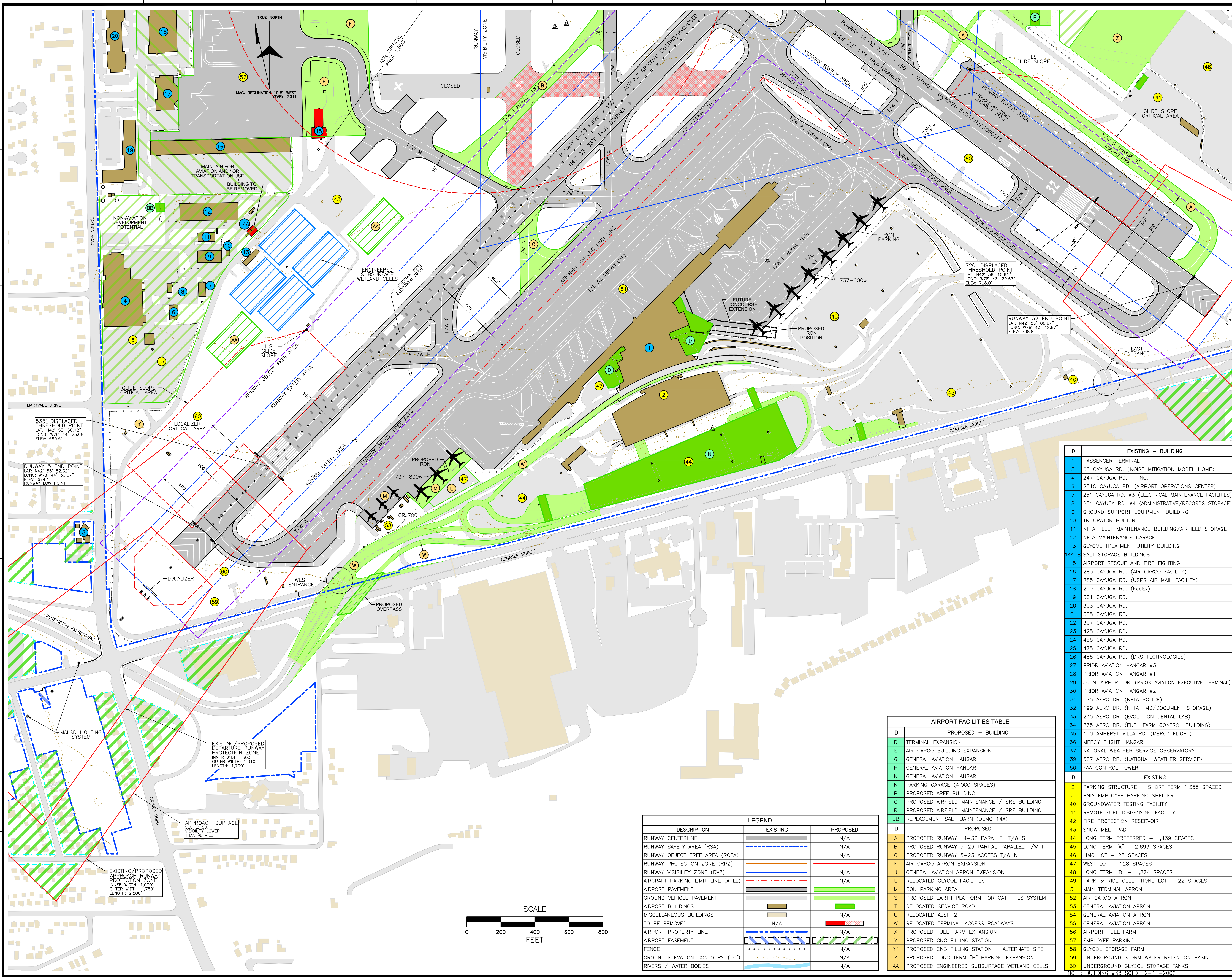


NFTA
Niagara Frontier
Transportation Authority
Serving Buffalo Niagara

BUFFALO NIAGARA
INTERNATIONAL
AIRPORT

SUSTAINABLE
MASTER PLAN UPDATE

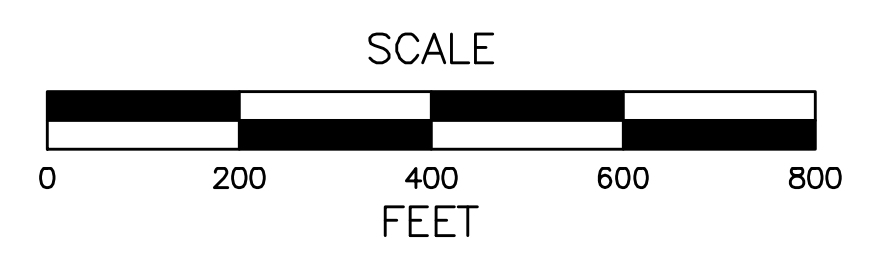
MARK	DATE	DESCRIPTION
ISSUE:		
NFTA PROJECT NO:	30BG0916	
DESIGNER PROJECT NO:	17493.00	
CAD DWG FILE:	CT-103.DWG	
DRAWN BY:	RCT	
CHECKED BY:	JEP	
SCALE:	AS NOTED	
COPYRIGHT:		
SHEET TITLE		
AIRPORT LAYOUT PLAN TABLES		
DRAWING#		
CT104		
SHEET#		
4 OF 14		



ID	EXISTING - BUILDING
1	PASSENGER TERMINAL
3	68 CAYUGA RD. (NOISE MITIGATION MODEL HOME)
4	247 CAYUGA RD. - INC.
6	251C CAYUGA RD. (AIRPORT OPERATIONS CENTER)
7	251 CAYUGA RD. #3 (ELECTRICAL MAINTENANCE FACILITIES)
8	251 CAYUGA RD. #4 (ADMINISTRATIVE/RECORDS STORAGE)
9	GROUND SUPPORT EQUIPMENT BUILDING
10	TRITURATOR BUILDING
11	NFTA FLEET MAINTENANCE BUILDING/AIRFIELD STORAGE
12	NFTA MAINTENANCE GARAGE
13	GLYCOL TREATMENT UTILITY BUILDING
14A-B	SALT STORAGE BUILDINGS
15	AIRPORT RESCUE AND FIRE FIGHTING
16	283 CAYUGA RD. (AIR CARGO FACILITY)
17	285 CAYUGA RD. (USPS AIR MAIL FACILITY)
18	299 CAYUGA RD. (FedEx)
19	301 CAYUGA RD.
20	303 CAYUGA RD.
21	305 CAYUGA RD.
22	307 CAYUGA RD.
23	425 CAYUGA RD.
24	455 CAYUGA RD.
25	475 CAYUGA RD.
26	485 CAYUGA RD. (DRS TECHNOLOGIES)
27	PRIOR AVIATION HANGAR #3
28	PRIOR AVIATION HANGAR #1
29	50 N. AIRPORT DR. (PRIOR AVIATION EXECUTIVE TERMINAL)
30	PRIOR AVIATION HANGAR #2
31	175 AERO DR. (NFTA POLICE)
32	199 AERO DR. (NFTA FMD/DOCUMENT STORAGE)
33	235 AERO DR. (EVOLUTION DENTAL LAB)
34	275 AERO DR. (FUEL FARM CONTROL BUILDING)
35	100 AMHERST VILLA RD. (MERCY FLIGHT)
36	MERCY FLIGHT HANGAR
37	NATIONAL WEATHER SERVICE OBSERVATORY
39	587 AERO DR. (NATIONAL WEATHER SERVICE)
50	FAA CONTROL TOWER

AIRPORT FACILITIES TABLE	
ID	PROPOSED - BUILDING
D	TERMINAL EXPANSION
E	AIR CARGO BUILDING EXPANSION
G	GENERAL AVIATION HANGAR
H	GENERAL AVIATION HANGAR
K	GENERAL AVIATION HANGAR
N	PARKING GARAGE (4,000 SPACES)
P	PROPOSED ARFF BUILDING
Q	PROPOSED AIRFIELD MAINTENANCE / SRE BUILDING
R	PROPOSED AIRFIELD MAINTENANCE / SRE BUILDING
BB	REPLACEMENT SALT BARN (DEMO 14A)

DESCRIPTION	LEGEND	
	EXISTING	PROPOSED
RUNWAY CENTERLINE	---	N/A
RUNWAY SAFETY AREA (RSA)	---	N/A
RUNWAY OBJECT FREE AREA (ROFA)	---	N/A
RUNWAY PROTECTION ZONE (RPZ)	---	N/A
RUNWAY VISIBILITY ZONE (RVZ)	---	N/A
AIRCRAFT PARKING LIMIT LINE (APLL)	---	N/A
AIRPORT PAVEMENT	---	---
GROUND VEHICLE PAVEMENT	---	---
AIRPORT BUILDINGS	---	---
MISCELLANEOUS BUILDINGS	---	N/A
TO BE REMOVED	---	---
AIRPORT PROPERTY LINE	---	N/A
AIRPORT EASEMENT	---	---
FENCE	---	N/A
GROUND ELEVATION CONTOURS (10')	---	N/A
RIVERS / WATER BODIES	---	N/A

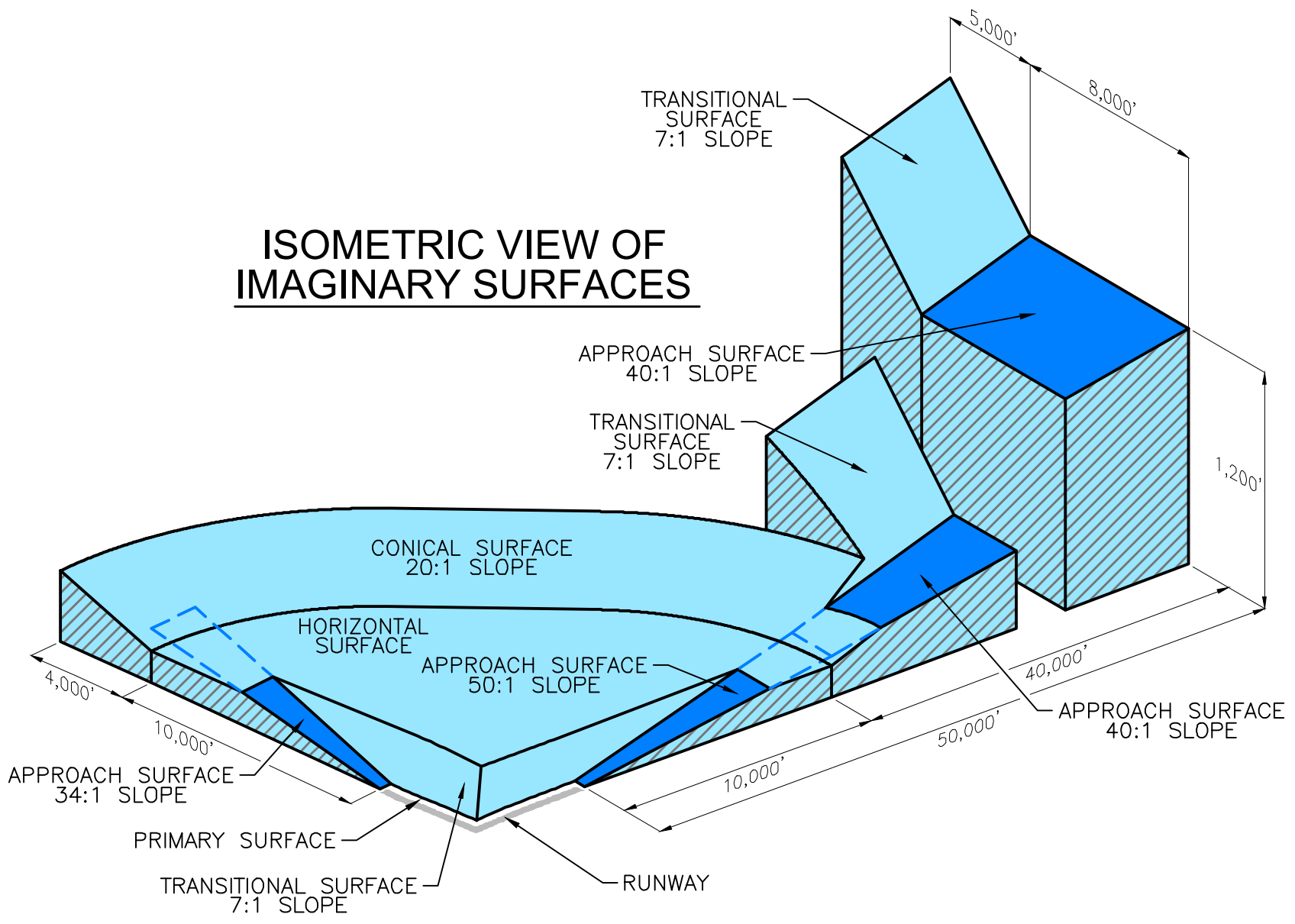
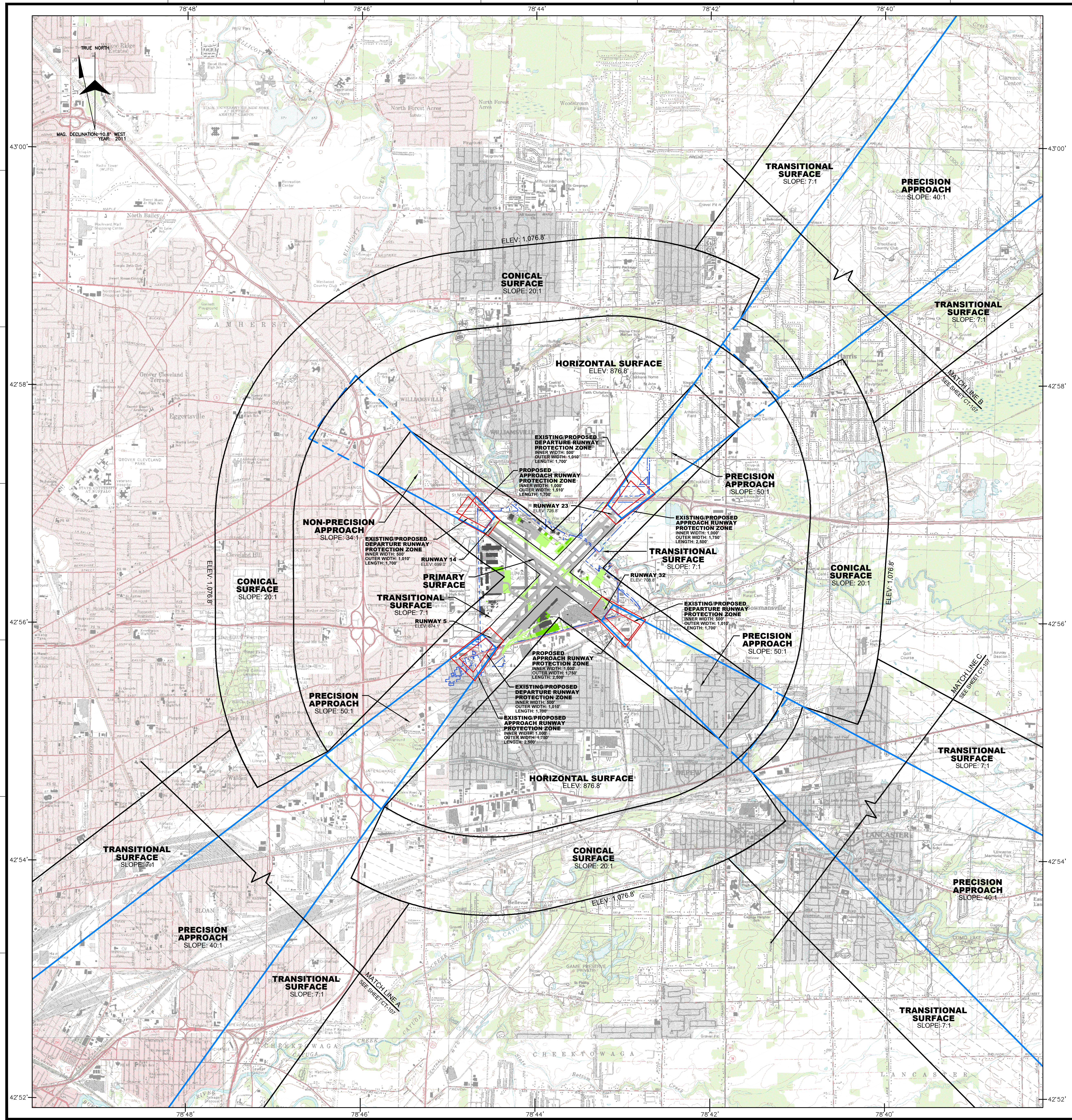


NFTA
 Niagara Frontier
 Transportation Authority
 Serving Buffalo Niagara

BUFFALO NIAGARA INTERNATIONAL AIRPORT
SUSTAINABLE MASTER PLAN UPDATE

MARK	DATE	DESCRIPTION

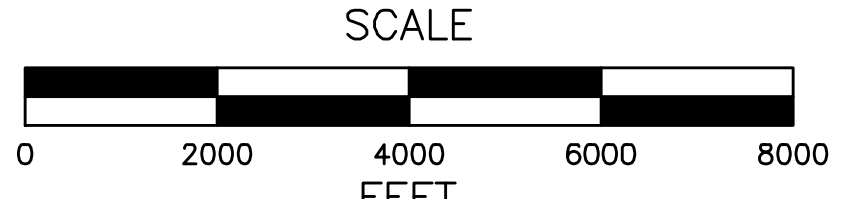
ISSUE:
 NFTA PROJECT NO: 30BG0916
 DESIGNER PROJECT NO: 17493.00
 CAD DWG FILE: CT-105.DWG
 DRAWN BY: RGT
 CHECKED BY: JEP
 SCALE: AS NOTED
 COPYRIGHT:
 SHEET TITLE
TERMINAL AREA PLAN
 DRAWING# **CT105**
 SHEET# 5 OF 14



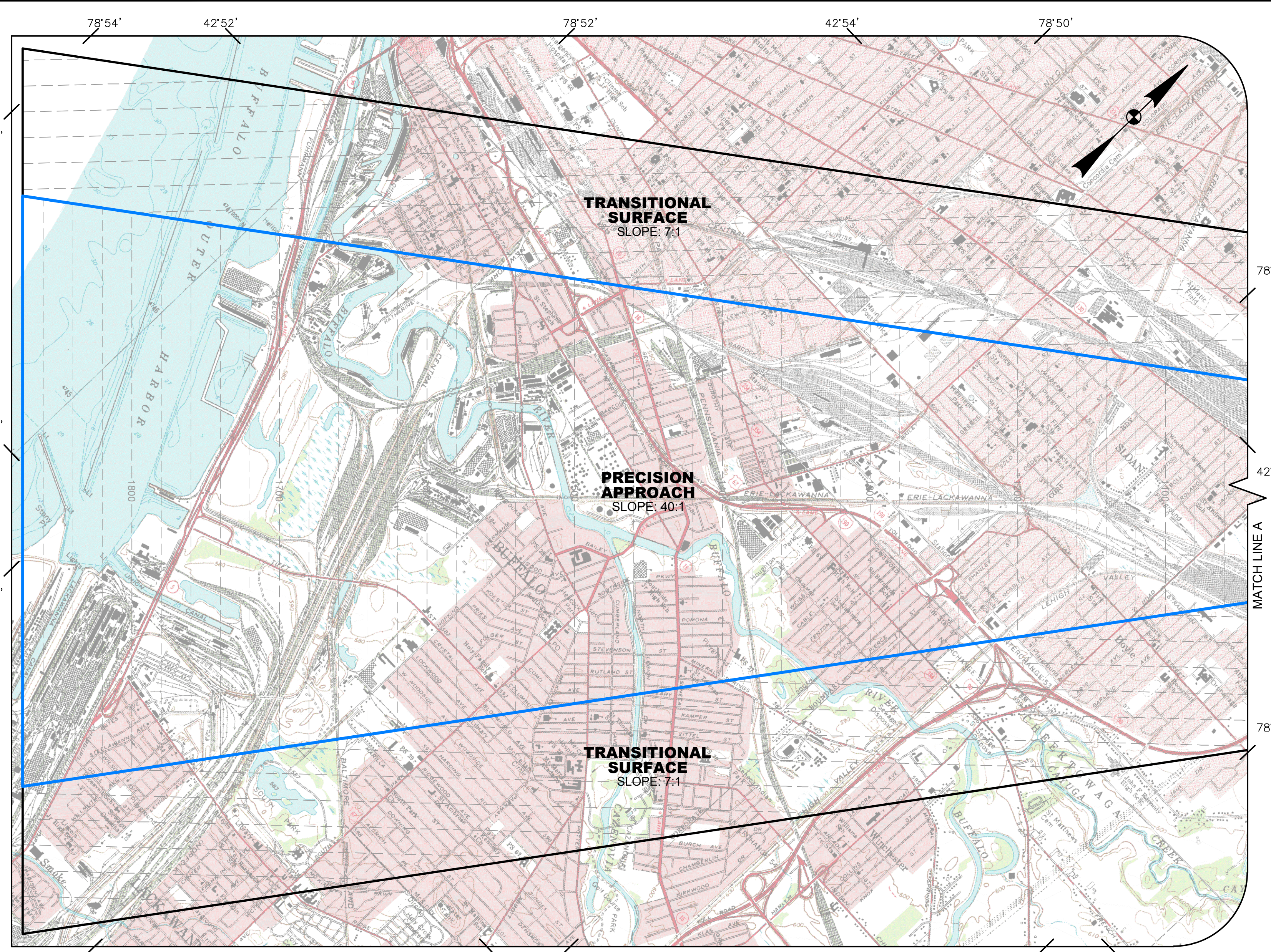
SOURCE: USGS QUADRANGLES

TONAWANDA EAST, NEW YORK	CLARENCE CENTER, NEW YORK	WOLCOTTVILLE, NEW YORK
BUFFALO NE, NEW YORK	LANCASTER, NEW YORK	
BUFFALO SE, NEW YORK	ORCHARD PARK, NEW YORK	EAST AURORA, NEW YORK

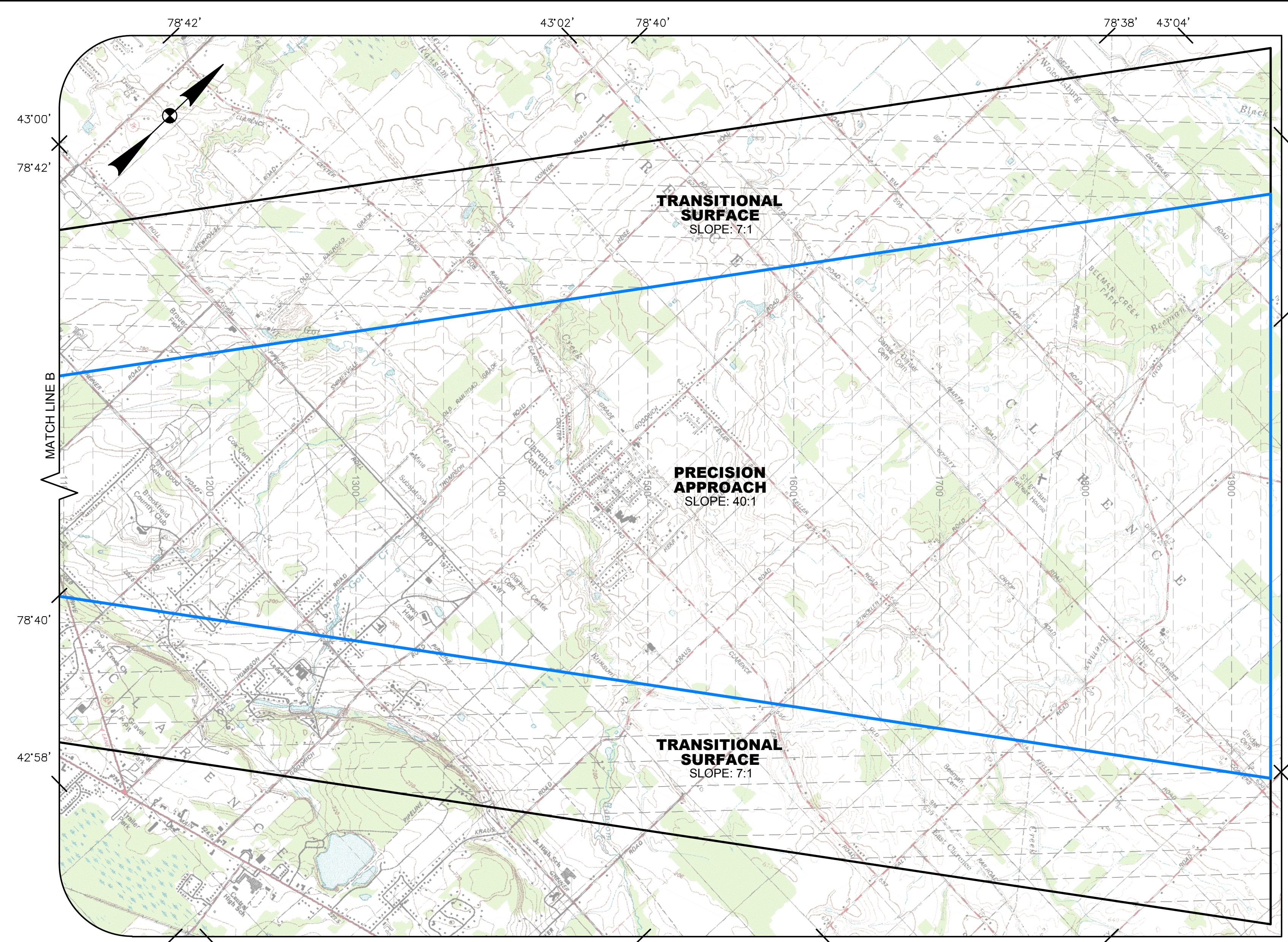
- NOTES:
- FOR INNER APPROACH OBSTRUCTIONS PLEASE REFER TO SHEETS 8, 9, 10, AND 11 OF 14.
 - NO OBSTRUCTIONS FOUND TO OUTER FAR PART 77 SURFACES.
 - PRIMARY SURFACE DIMENSIONS FOR BOTH RUNWAYS: 1,000' WIDE, 200' BEYOND RUNWAY END



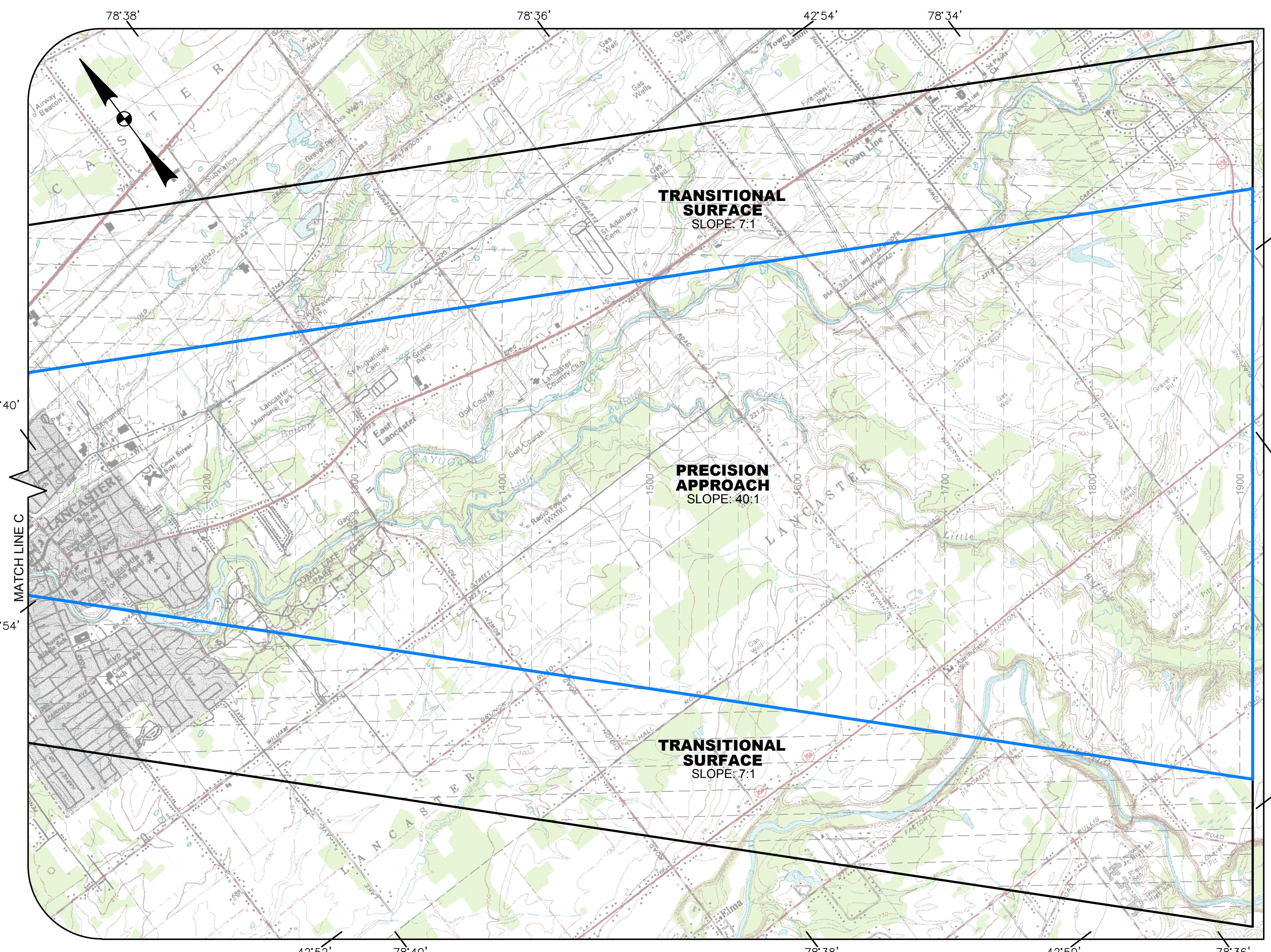
MARK	DATE	DESCRIPTION



(A) RUNWAY 5 APPROACH
1" = 2,000'



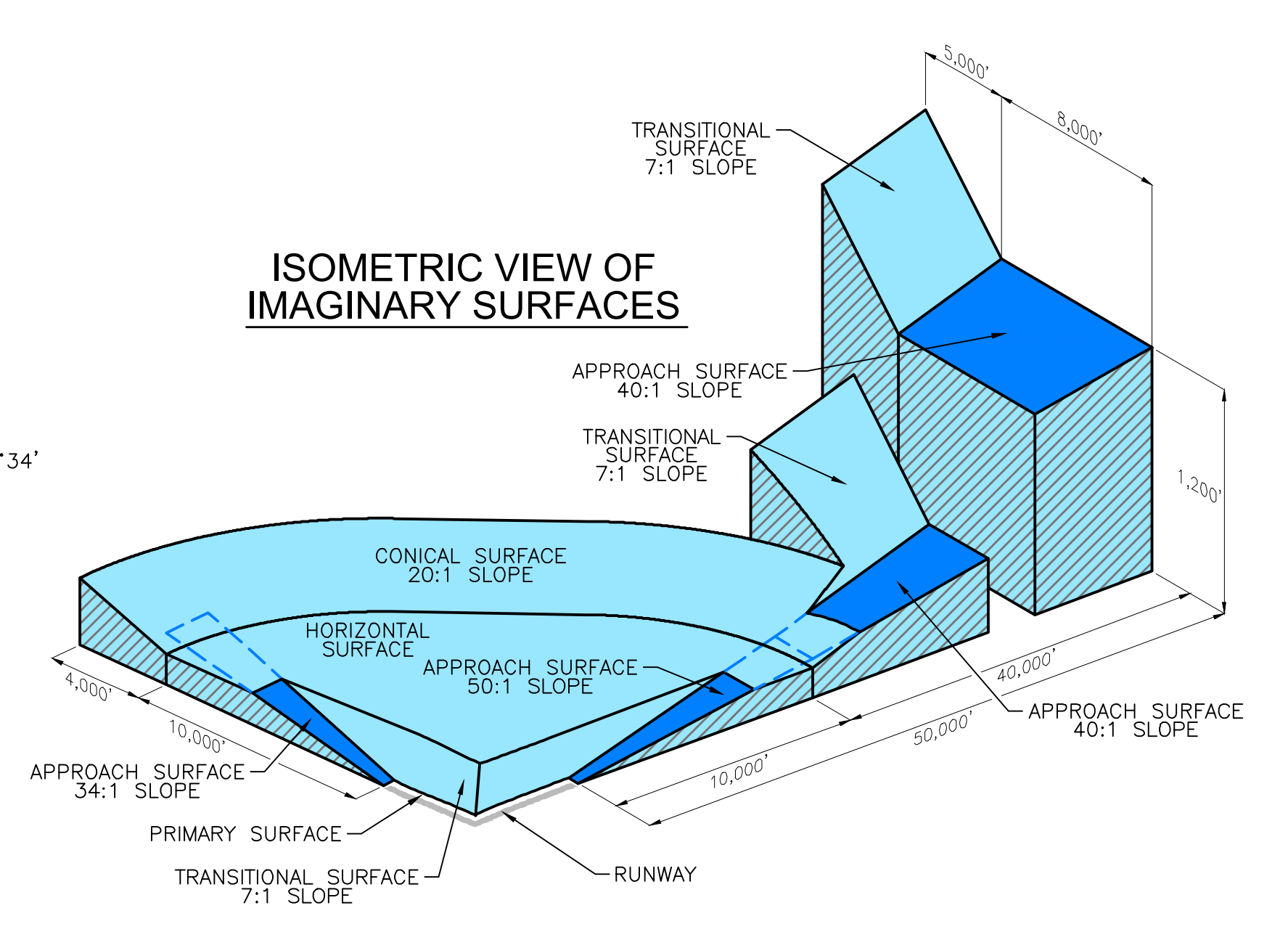
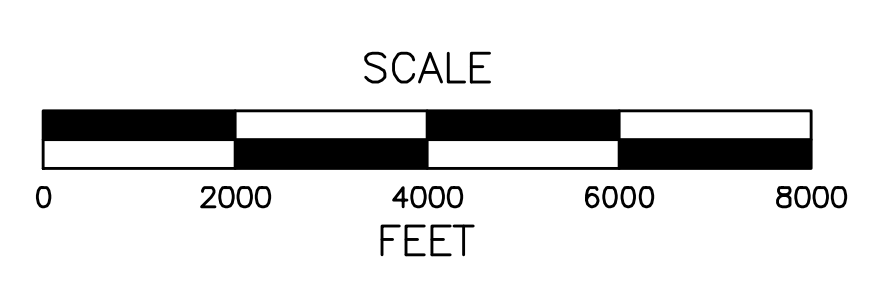
(B) RUNWAY 23 APPROACH
1" = 2,000'



(C) RUNWAY 32 APPROACH
1" = 2,000'

SOURCE: USGS QUADRANGLES

TONAWANDA EAST, NEW YORK	CLARENCE CENTER, NEW YORK	WOLCOTTVILLE, NEW YORK
BUFFALO NE, NEW YORK	LANCASTER, NEW YORK	
BUFFALO SE, NEW YORK	ORCHARD PARK, NEW YORK	EAST AURORA, NEW YORK



- NOTES:
- FOR INNER APPROACH OBSTRUCTIONS PLEASE REFER TO SHEETS 8, 9, 10, AND 11 OF 14.
 - NO OBSTRUCTIONS FOUND TO OUTER FAR PART 77 SURFACES.

BUFFALO NIAGARA
INTERNATIONAL AIRPORT

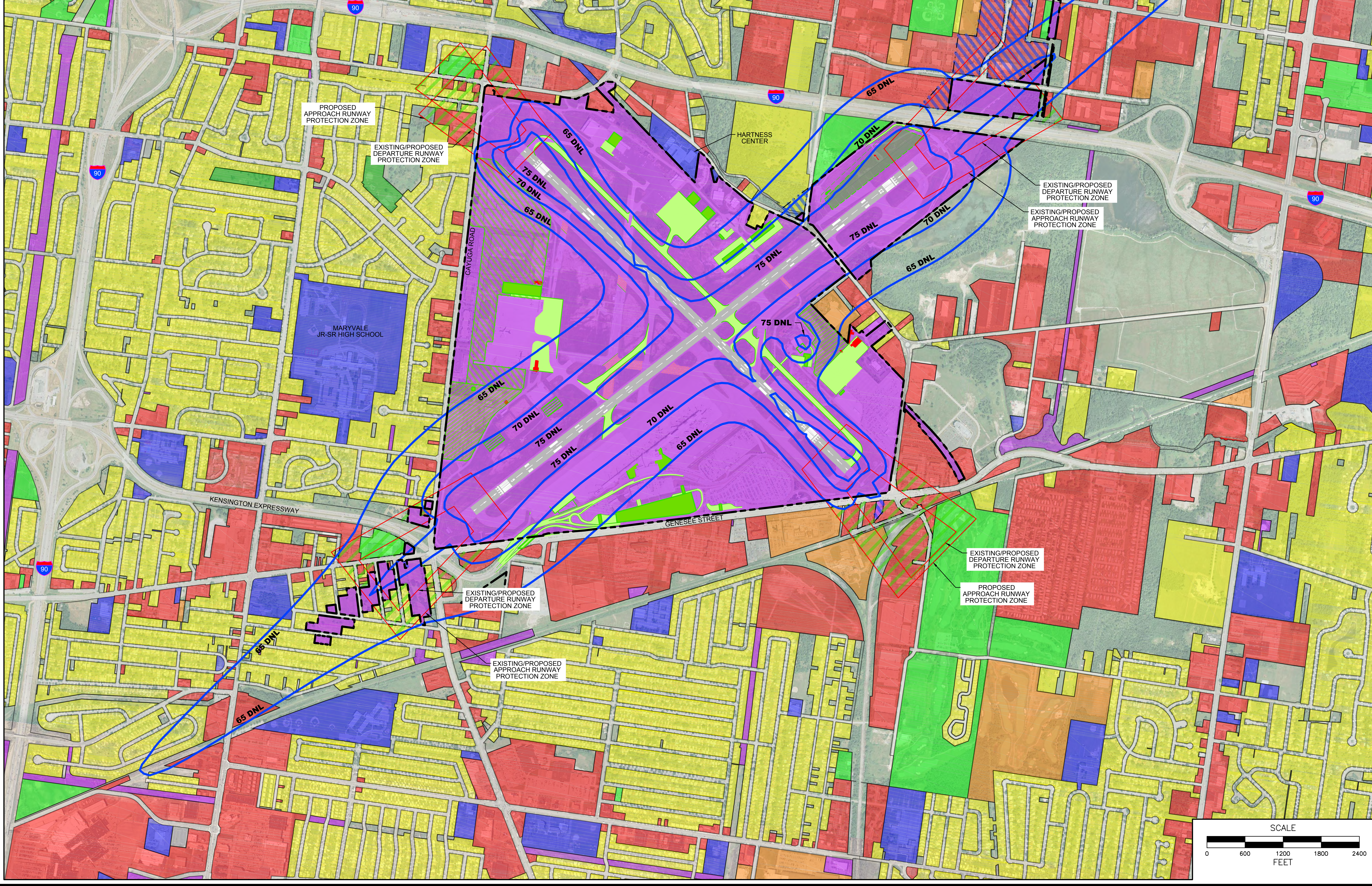
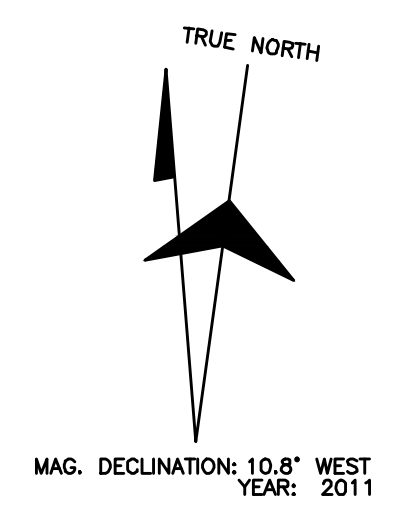
SUSTAINABLE
MASTER PLAN UPDATE

MARK	DATE	DESCRIPTION
ISSUE:		
NFTA PROJECT NO:	30BG0916	
DESIGNER PROJECT NO:	17493.00	
CAD DWG FILE:	CT-106.DWG	
DRAWN BY:	RCT	
CHECKED BY:	JEP	
SCALE:	AS NOTED	
COPYRIGHT:		

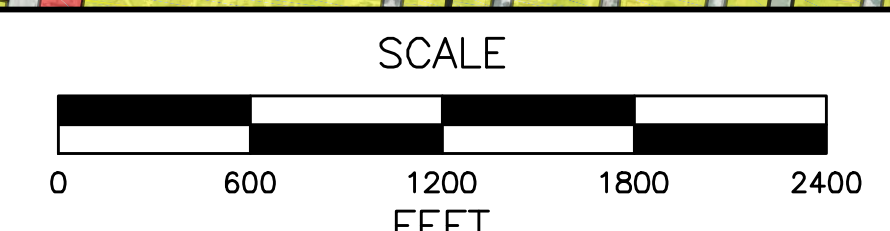
SHEET TITLE

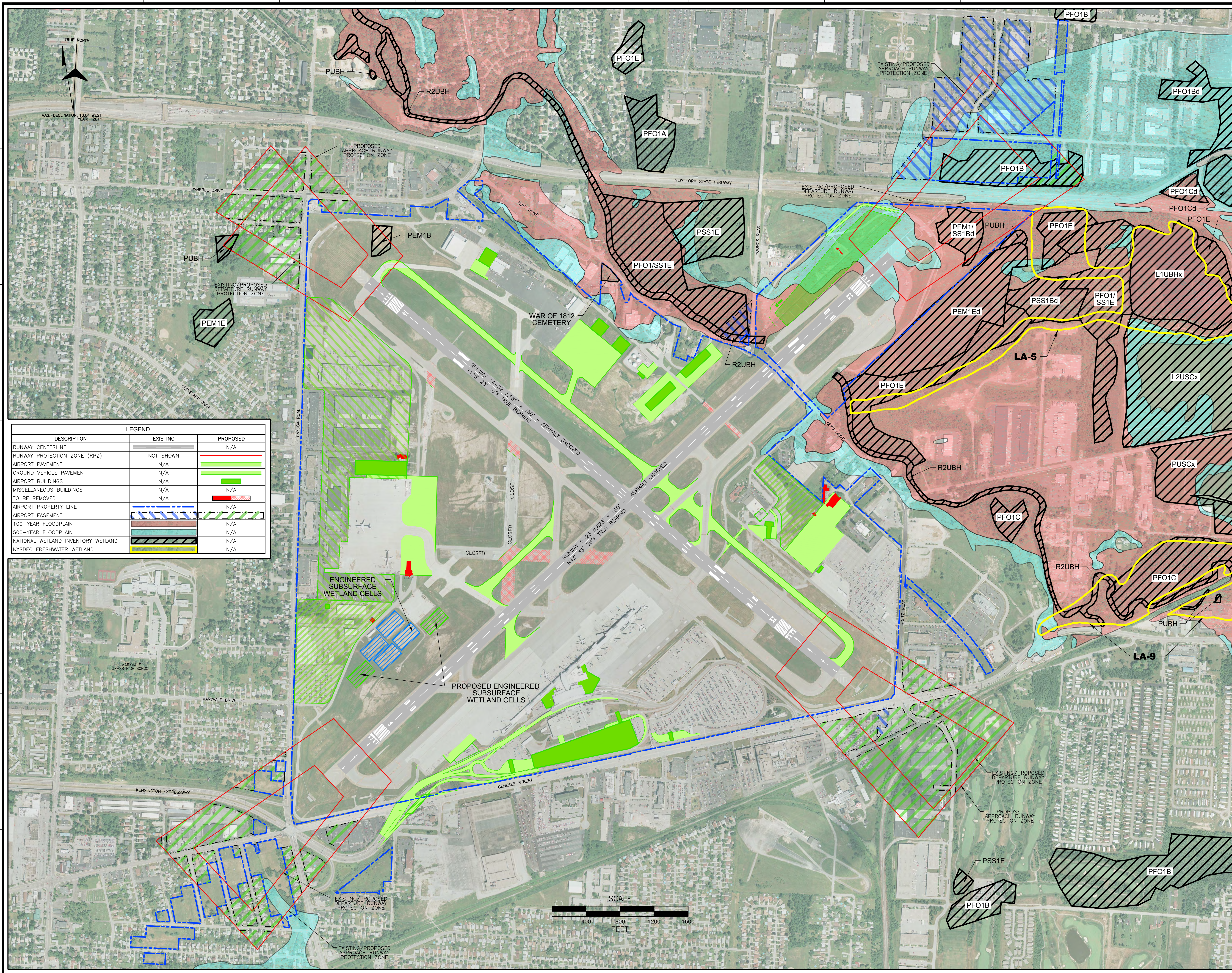
AIRPORT AIRSPACE
PLAN
OUTER APPROACH SURFACES

DESCRIPTION	LEGEND	
	EXISTING	PROPOSED
RUNWAY CENTERLINE		N/A
RUNWAY PROTECTION ZONE (RPZ)	NOT SHOWN	
AIRPORT PAVEMENT	N/A	
GROUND VEHICLE PAVEMENT	N/A	
AIRPORT BUILDINGS	N/A	
TO BE REMOVED	N/A	
AIRPORT PROPERTY LINE		N/A
AIRPORT EASEMENT		
NOISE CONTOUR (2030)		
LAND USE - COMMERCIAL		N/A
LAND USE - COMMUNITY SERVICES		N/A
LAND USE - INDUSTRIAL		N/A
LAND USE - PUBLIC SERVICES		N/A
LAND USE - RECREATION & ENTERTAINMENT		N/A
LAND USE - RESIDENTIAL		N/A
LAND USE - VACANT		N/A
LAND USE - FORESTED & PUBLIC PARKS		N/A



MARK	DATE	DESCRIPTION
ISSUE:		
NFTA PROJECT NO:	30BG0916	
DESIGNER PROJECT NO:	17493.00	
CAD DWG FILE:	CT-112.DWG	
DRAWN BY:	RGT	
CHECKED BY:	JEP	
SCALE:	AS NOTED	
COPYRIGHT:		
SHEET TITLE		





LEGEND

DESCRIPTION	EXISTING	PROPOSED
RUNWAY CENTERLINE		N/A
RUNWAY PROTECTION ZONE (RPZ)	NOT SHOWN	
AIRPORT PAVEMENT	N/A	
GROUND VEHICLE PAVEMENT	N/A	
AIRPORT BUILDINGS	N/A	
MISCELLANEOUS BUILDINGS TO BE REMOVED	N/A	
AIRPORT PROPERTY LINE		N/A
AIRPORT EASEMENT		N/A
100-YEAR FLOODPLAIN		N/A
500-YEAR FLOODPLAIN		N/A
NATIONAL WETLAND INVENTORY WETLAND		N/A
NYSDEC FRESHWATER WETLAND		N/A

NFTA
Niagara Frontier
Transportation Authority
Serving Buffalo Niagara

**BUFFALO NIAGARA
INTERNATIONAL
AIRPORT**

**SUSTAINABLE
MASTER PLAN UPDATE**

MARK	DATE	DESCRIPTION
ISSUE:		
NFTA PROJECT NO:	30BG0916	
DESIGNER PROJECT NO:	17493.00	
CAD DWG FILE:	CT-114.DWG	
DRAWN BY:	RGT	
CHECKED BY:	JEP	
SCALE:	AS NOTED	
COPYRIGHT:		

SHEET TITLE

**AIRPORT
ENVIROMENTAL
INVENTORY MAP**

DRAWING#
CT114

SHEET# 14 OF 14